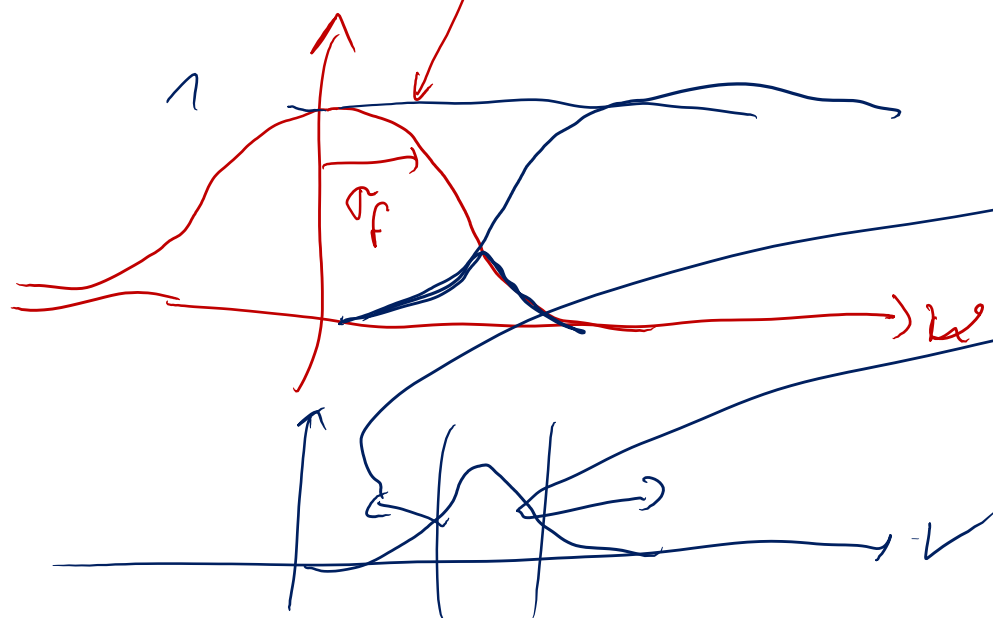


$$\left(i(x,y) * g(x,y) \right) * l(x,y)$$

(5)

$$\sqrt{t} \left[I(u,v) \cdot \underset{\sigma_f}{G(u,v)} \cdot L(u,v) \right]$$



$$\sigma_s \gg \sigma_f \ll \sigma_l$$

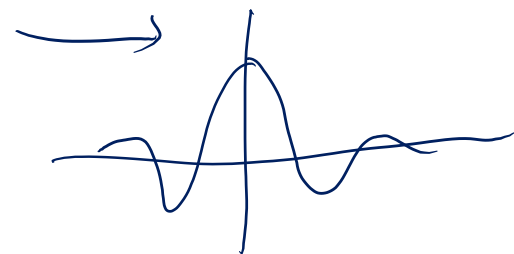


$$(c(x,y) * g(x,y)) * l(x,y)$$

$$(c(x,y) * (g(x,y) * l(x,y))) \xrightarrow{x \rightarrow y}$$

$$\left(\frac{d^2}{dx^2} \right) (e^{-\pi x^2})$$

psf



$x \rightarrow y$

$$I(u,v) \cdot \left[(2\pi jv)^2 \cdot e^{-\pi v^2} \right] \propto v^2 e^{-\pi v^2}$$

$$\begin{aligned} f(x) &\approx f(u) \\ f'(x) &\approx (2\pi jv) f(u) \\ f''(u) &\approx (2\pi jv)^2 f(u) \end{aligned}$$

