
XT2: TRAINING AN X-TO-TEXT TYPING INTERFACE WITH ONLINE LEARNING FROM IMPLICIT FEEDBACK

Jensen Gao, Siddharth Reddy, Glen Berseth, Anca D. Dragan, Sergey Levine

Department of Electrical Engineering and Computer Science

University of California, Berkeley

{jenseng, sgr, gberseth, anca, svlevine}@berkeley.edu

ABSTRACT

We aim to help users communicate their intent to machines using flexible, adaptive interfaces that translate arbitrary user input into desired actions. In this work, we focus on assistive typing applications in which a user cannot operate a keyboard, but can instead supply other inputs, such as webcam images that capture eye gaze. Standard methods train a model on a fixed dataset of user inputs, then deploy a static interface that does not learn from its mistakes; in part, because extracting an error signal from user behavior can be challenging. We investigate a simple idea that would enable such interfaces to improve over time, with minimal additional effort from the user: online learning from *implicit* user feedback on the accuracy of the interface’s actions. In the typing domain, we leverage *backspaces* as implicit feedback that the interface did not perform the desired action. We propose an algorithm called *x-to-text* (XT2) that trains a predictive model of this implicit feedback signal, and uses this model to fine-tune any existing, default interface for translating user input into actions that select words or characters. We evaluate XT2 through a small-scale online user study with 12 participants who type sentences by gazing at their desired words, and a large-scale observational study on handwriting samples from 60 users. The results show that XT2 learns to outperform a non-adaptive default interface, stimulates user co-adaptation to the interface, personalizes the interface to individual users, and can leverage offline data collected from the default interface to improve its initial performance and accelerate online learning.

1 INTRODUCTION

Recent advances in user interfaces have enabled people with sensorimotor impairments to more effectively communicate their intent to machines. For example, Ward et al. (2000) enable users to type characters using an eye gaze tracker instead of a keyboard, and Willett et al. (2020) enable a paralyzed human patient to type using a brain implant that records neural activity. The main challenge in building such interfaces is translating high-dimensional, continuous user input into desired actions. Standard methods typically calibrate the interface on predefined training tasks for which expert demonstrations are available, then deploy the trained interface. Unfortunately, this does not enable the interface to improve with use or adapt to distributional shift in the user inputs.

In this paper, we focus on the problem of assistive typing: helping a user select words or characters without access to a keyboard, using either eye gaze inputs (Ward et al., 2000) or handwriting inputs (Willett et al., 2020). To enable any existing, default interface to continually adapt to the user, we train a model using online learning from user feedback. The key insight is that the user provides implicit feedback on the interface’s actions via *backspaces*, which indicate that the interface did not perform the desired action in response to a given input. By learning from this implicit signal instead of an explicit label, we do not require any additional effort from the user to improve the interface. Furthermore, because our method is applied on top of the user’s default interface, our approach is complementary to other work that develops state-of-the-art, domain-specific methods for problems like gaze tracking and handwriting recognition. Figure 1 describes our algorithm: we initialize our model using offline data generated by the default interface, deploy our interface as an augmentation to the default interface, collect online feedback, and update our model.

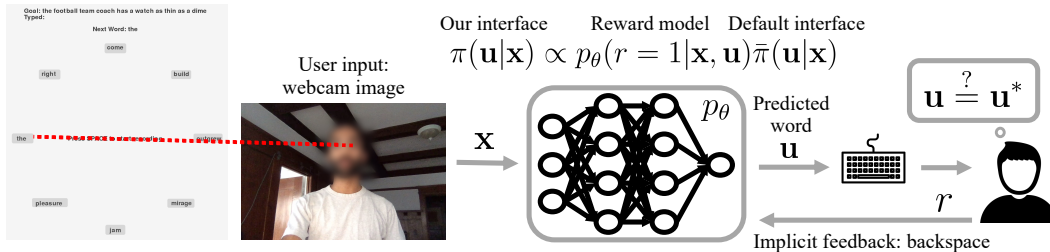


Figure 1: We formulate assistive typing as a human-in-the-loop decision-making problem, in which the interface observes user inputs (e.g., webcam images of eye gaze) and performs actions (e.g., word selections) on behalf of the user. We treat a backspace as implicit feedback from the user that the interface performed the wrong action. By training a model online to predict backspaces, we continually improve the interface.

We formulate assistive typing as an online decision-making problem, in which the interface receives observations of user inputs, performs actions that select words or characters, and receives a reward signal that is automatically constructed from the user’s backspaces. To improve the default interface’s actions, we fit a neural network reward model that predicts the reward signal given the user’s input and the interface’s action. Upon observing a user input, our interface uses the trained reward model to update the prior policy given by the default interface to a posterior policy conditioned on optimality, then samples an action from this posterior (see Figure 1). We call this method *x-to-text* (XT2), where *x* refers to the arbitrary type of user input (e.g., eye gaze or handwriting).

Our primary contribution is the XT2 algorithm for continual learning of a communication interface from implicit user feedback. We primarily evaluate XT2 through an online user study with 12 participants who use a webcam-based gaze tracking system to select words from a display. To run ablation experiments that would be impractical in the online study, we also conduct an observational study with 60 users who use a tablet and stylus to draw pictures of individual characters. The results show that XT2 quickly learns to map input images of eye gaze or character drawings to discrete word or character selections. By learning from online feedback, XT2 improves upon a default interface that is only trained once using supervised learning and, as a result, suffers from distribution shift (e.g., induced by changes in the user’s head position, lighting, and other visual conditions over time in the eye gaze experiment). Furthermore, XT2 leverages offline data generated by the default interface to accelerate online learning, stimulates co-adaptation from the user in the online study, and personalizes the interface to the handwriting style of each user in the observational study.

2 LEARNING TO INFER INTENT FROM USER INPUT

In our problem setting, the user cannot directly perform actions; e.g., due to a sensorimotor impairment. Instead, the user relies on an assistive typing interface to infer the user’s intended action from available inputs such as webcam images of eye gaze or handwritten character drawings. As such, we formulate assistive typing as a contextual bandit problem (Langford & Zhang, 2008; Yue & Joachims, 2009; Li et al., 2010; Lan & Baraniuk, 2016; Gordon et al., 2019). At each timestep, the user provides the interface with a context $\mathbf{x} \in \mathcal{X}$, where \mathcal{X} is the set of possible user inputs (e.g., webcam images). The interface then performs an action $\mathbf{u} \in \mathcal{U}$, where \mathcal{U} is the set of possible actions (e.g., word selections). We assume the true reward function is unknown, since the user cannot directly specify their desired task (e.g., writing an email or filling out a form). Instead of eliciting a reward function or explicit reward signal from the user, we *automatically construct a reward signal from the user’s backspaces*. The key idea is to treat backspaces as implicit feedback on the accuracy of the interface’s actions.

Our approach to this problem is outlined in Figure 1. We aim to minimize expected regret, which, in our setting, is characterized by the total number of backspaces throughout the lifetime of the interface. While a number of contextual bandit algorithms with lower regret bounds have been proposed in prior work (Lattimore & Szepesvári, 2020), we use a simple strategy that works well in our experiments: train a neural network reward model to predict the reward given the user’s input and the interface’s action, and select actions with probability proportional to their predicted optimality. Our approach is similar to prior work on deep contextual multi-armed bandits (Collier & Llorens,

2018) and NeuralUCB (Collier & Llorens, 2018), except that instead of using Thompson sampling or UCB to balance exploration and exploitation, we use a simple, stochastic policy.

2.1 MODELING USER BEHAVIOR AND IMPLICIT FEEDBACK

Unlike in the standard multi-armed bandit framework, we do not get to observe an extrinsic reward signal that captures the underlying task that the user aims to perform. To address this issue, we infer rewards from naturally-occurring user behavior. In particular, in the assistive typing setting, we take advantage of the fact that we can observe when the user *backspaces*; i.e., when they delete the most recent word or character typed by the interface. To infer rewards from backspaces, we make two assumptions about user behavior: (1) the user can perform a backspace action independently of our interface; (2) the user tends to backspace incorrect actions; and (3) the user does not tend to backspace correct actions. Hence, we assign a positive reward to actions that were not backspaced, and assign zero reward to backspaced actions. Formally, let $r \in \{0, 1\}$ denote this reward signal, where $r = 0$ indicates an incorrect action and $r = 1$ indicates a correct action. For example, if the user wants to type “banana” and provides the interface with eye gaze input \mathbf{x} , but the interface incorrectly types “apple”, then the user may choose to backspace “apple”, in which case the system automatically logs the input-action-reward triple $(\mathbf{x}, \mathbf{u} = \text{apple}, r = 0)$.

2.2 TRAINING THE REWARD MODEL TO PREDICT FEEDBACK

In order to perform actions that minimize expected regret – i.e., the total number of backspaces over time – we need to learn a model that predicts whether or not the user will backspace a given action in a given context. To do so, we learn a reward model $p_\theta(r|\mathbf{x}, \mathbf{u})$, where p_θ is a neural network and θ are the weights. Since the reward $r \in \{0, 1\}$ can only take on one of two values, p_θ is a binary classifier. We train this binary classifier on a dataset \mathcal{D} of input-action-reward triples $(\mathbf{x}, \mathbf{u}, r)$. In particular, we fit the model p_θ by optimizing the maximum-likelihood objective, i.e., the binary cross-entropy loss,

$$\ell(\theta) = - \sum_{(\mathbf{x}, \mathbf{u}, r) \in \mathcal{D}} r \log(p_\theta(r = 1|\mathbf{x}, \mathbf{u})) + (1 - r) \log(1 - p_\theta(r = 1|\mathbf{x}, \mathbf{u})). \quad (1)$$

Since XT2 learns from human-in-the-loop feedback, the amount of training data is limited by how frequently the user operates the interface. To reduce the amount of online interaction data needed to train the reward model, we use offline pretraining. We assume that the user already has access to some default interface for typing. We also assume access to an offline dataset of input-action pairs generated by the user and this default interface. We assign zero rewards to the backspaced actions and positive rewards to the non-backspaced actions in this offline dataset, and initially train our reward model to predict these rewards given the user’s inputs and the default interface’s actions. Thus, when XT2 is initially deployed, the reward model has already been trained on the offline data, and requires less online interaction data to reach peak accuracy.

2.3 USING THE REWARD MODEL TO SELECT ACTIONS

Even with offline pretraining, the initial reward model may not be accurate enough for practical use. To further improve the initial performance of our interface at the onset of online training, we combine our reward model $p_\theta(r|\mathbf{x}, \mathbf{u})$ with the default interface $\bar{\pi}(\mathbf{u}|\mathbf{x})$. We assume that $\bar{\pi}$ is a stochastic policy and that we can evaluate it on specific inputs, but do not require access to its implementation. We set our policy $\pi(\mathbf{u}|\mathbf{x}) = p(\mathbf{u}|\mathbf{x}, r = 1)$ to be the probability of an action conditional on optimality, following the control-as-inference framework (Levine, 2018). Applying Bayes’ theorem, we get $p(\mathbf{u}|\mathbf{x}, r = 1) \propto p(r = 1|\mathbf{x}, \mathbf{u})p(\mathbf{u}|\mathbf{x})$. The first term is given by our reward model p_θ , and the second term is given by the default interface. Combining these, we get the policy

$$\pi(\mathbf{u}|\mathbf{x}) \propto p_\theta(r = 1|\mathbf{x}, \mathbf{u})\bar{\pi}(\mathbf{u}|\mathbf{x}). \quad (2)$$

This decomposition of the policy improves the initial performance of our interface at the onset of online training, and guides exploration for training the reward model. It also provides a framework for incorporating a language model into our interface, as described in Section 4.3.

Our x-to-text (XT2) method is summarized in Algorithm 1. In the beginning, we assume the user has already been operating the default interface $\bar{\pi}$ for some time. In doing so, they generate an ‘offline’

Algorithm 1 X-to-Text (XT2)

Require $\bar{\pi}, \theta_{\text{init}}$ ▷ default interface, pretrained reward model parameters
while true do
 $\mathbf{x} \sim p_{\text{user}}(\mathbf{x})$ ▷ user gives input
 $\mathbf{u} \sim \pi(\mathbf{u}|\mathbf{x}) \propto p_{\theta}(r = 1|\mathbf{x}, \mathbf{u})\bar{\pi}(\mathbf{u}|\mathbf{x})$ ▷ interface performs action
 $r \leftarrow 0$ if user backspaces else 1 ▷ infer reward from implicit feedback
 $\mathcal{D} \leftarrow \mathcal{D} \cup \{(\mathbf{x}, \mathbf{u}, r)\}$ ▷ store online input-action-reward data
 $\theta \leftarrow \theta_{\text{init}} + \nabla_{\theta} \sum_{(\mathbf{x}, \mathbf{u}, r) \in \mathcal{D}} \log(p_{\theta}(r|\mathbf{x}, \mathbf{u}))$ ▷ train reward model to convergence w/SGD

dataset that we use to train the initial reward model parameters θ_{init} . When the user starts using XT2, our interface π already improves upon the default interface $\bar{\pi}$ by combining the default interface with the initial reward model via Equation 2. As the user continues operating our interface, the resulting online data is used to maintain or improve the accuracy of the reward model. At each timestep, the user provides the interface with input \mathbf{x} . The interface then uses the policy in Equation 2 to select an action \mathbf{u} . We then re-train the reward model p_{θ} , using stochastic gradient descent to optimize the maximum-likelihood objective in Equation 1. Appendix A.1 discusses the implementation details.

3 RELATED WORK

Prior methods for training interfaces with supervised learning typically collect a dataset of input-action pairs, then fit a model that predicts actions given inputs. These methods tend to either assume access to ground-truth action labels from the user (Anumanchipalli et al., 2019; Wang et al., 2016; Karamcheti et al., 2020), or assume the user always intends to take the optimal action (Gilja et al., 2012; Dangi et al., 2013; 2014; Merel et al., 2015). Unfortunately, the user may not always be able to provide ground-truth action labels. Furthermore, in order for the system to compute optimal actions, the user must be instructed to perform specific calibration tasks for which the optimal policy is already known. These calibration tasks may not be representative of the tasks that the user intends to perform. This can lead to a distribution mismatch between the inputs that the model is trained on during the calibration phase, and the inputs that the model is evaluated on at test time when the user performs their desired tasks. Standard methods address this problem by periodically repeating the calibration process (Willett et al., 2020; Proroković et al., 2020), which can be time-consuming, disruptive, and requires assumptions about when and how frequently to re-calibrate. XT2 overcomes these issues by continually learning from user feedback on tasks that naturally arise as the user types, rather than imposing separate training and test phases.

Extensive prior work on text entry systems (MacKenzie & Tanaka-Ishii, 2010) enables users to type using eye gaze (Ward et al., 2000), Braille (Oliveira et al., 2011), gestures (Jones et al., 2010), and palm keyboards for wearable displays (Wang et al., 2015). XT2 differs in that it enables the user to type using arbitrary inputs like eye gaze or handwriting, rather than a fixed type of input that restricts the flexibility of the system and must be anticipated in advance by the system designer.

XT2 trains a typing interface through reinforcement learning (RL) with human-in-the-loop feedback instead of an explicit reward function. COACH (MacGlashan et al., 2017; Arumugam et al., 2019), TAMER (Knox & Stone, 2009; Warnell et al., 2017), and preference learning (Sadigh et al., 2017; Christiano et al., 2017) also train an RL agent without access to extrinsic rewards, but require explicit user feedback on the agent’s behavior. XT2 differs in that it learns from implicit feedback, which requires no additional effort from the user to train the agent. Other prior work trains RL agents from implicit signals, such as electroencephalography (Xu et al., 2020), peripheral pulse measurements (McDuff & Kapoor, 2019), facial expressions (Jaques et al., 2017), and clicks in web search (Radlinski & Joachims, 2006). XT2 differs in that it trains an interface that always conditions on the user’s input when selecting an action, rather than an autonomous agent that ignores user input after the training phase. Furthermore, XT2 focuses on the assistive typing domain, where, to the best of our knowledge, backspaces have not yet been used to train an interface through RL. Related work on assistive robotic teleoperation interfaces proposes human-in-the-loop RL methods that minimally modify the user’s actions (Pilarski et al., 2011; Broad et al., 2017; Reddy et al., 2018; Schaff & Walter, 2020; Du et al., 2020; Jeon et al., 2020). XT2 differs in that it learns to operate on arbitrary types of user inputs, instead of assuming the user provides suboptimal action inputs.

4 EXPERIMENTAL EVALUATION

We seek to answer the following questions: **Q1**: Does XT2 improve with use and learn to outperform a non-adaptive interface? **Q2**: Does the user adapt to the interface while the interface adapts to the user? **Q3**: Does XT2 personalize the interface to different input styles? **Q4**: Do offline pretraining and an informative prior policy accelerate online learning? **Q5**: Does online learning improve the interface beyond the initialization provided by offline pretraining? To answer **Q1-2**, we run a user study with 12 participants who use webcam images of their eyes to type via gaze (see Figure 1). To answer **Q3-5**, we conduct an observational study with prerecorded images of handwritten characters drawn by 60 users with a tablet and stylus (see Figure 5 in the appendix). In our experiments, we use default interfaces that are not necessarily the state of the art in gaze tracking or handwriting recognition, but are instead chosen to test the hypotheses in **Q1-5**. Appendix A.1 describes the experiment design and implementation of XT2 in detail.

4.1 ADAPTING THE INTERFACE TO THE USER

In this experiment, we aim to test XT2’s ability to improve over time, relative to a non-adaptive, default interface. To that end, we formulate a gaze-based word selection task in which we display a list of words to the user (see Figure 1), ask them to look at their desired word, record an image from their webcam that captures their eye gaze, and predict their desired word. To measure objective performance, we ask the user to type specific goal sentences. To simplify the experiment, we restrict the action space $\mathcal{U} = \{1, 2, 3, \dots, 8\}$ to the eight buttons on the screen, and always assign the next word in the sentence to one of those eight buttons (see Figure 1).

We evaluate (1) a default interface that uses iTracker (Krafka et al., 2016) to estimate the user’s 2D gaze position on the screen and select the nearest button, and (2) XT2. We calibrate the default interface once at the beginning of each experimental condition for each user, by asking the user to look at each of the eight buttons one by one, recording 20 eye image samples for each button in 2 cycles, and training a 2D gaze position estimator using the iTracker method. After calibration, the default interface stays fixed, and does not adapt to the user within the session; in part, because we do not know in advance which word the user intends to select, so we cannot automatically harvest the necessary paired data of gaze images and targets to re-calibrate the interface. Instead of periodically interrupting the user to gather new paired data and re-calibrate, XT2 continually adapts to the user throughout the session, following Algorithm 1. Appendix A.1 describes the implementation of the default interface and XT2 in further detail. We measure the performance of each method using the ground-truth accuracy of action selections. To access ground-truth actions for calculating accuracy, we instruct the user to try to select a specified word from the list displayed on their screen. Note that this instruction is not an essential component of XT2, and is used purely to evaluate objective performance in this experiment.

The results in panel (a) of Figure 2 show that at the onset of online learning, both XT2 and the default interface predict the user’s intended action with the same accuracy, but quickly diverge. The default interface’s performance degrades over time, potentially due to distribution shift in the user’s inputs caused by changes in head position, background lighting, and other visual conditions. In contrast, XT2 maintains the interface’s strong initial performance throughout the experiment, by continually updating the reward model to reflect changes in the user’s inputs. Panel (b) shows that XT2 significantly improves the performance of 10 out of 12 participants, and that there are diminishing returns to XT2 when the default interface already performs well. We ran a one-way repeated measures ANOVA on the action prediction accuracy dependent measure from the default and XT2 conditions, with the presence of XT2 as a factor, and found that $f(1, 11) = 17.23, p < 0.01$. The subjective evaluations in Table 2 in the appendix corroborate these results: users reported feeling that XT2 selected the words they wanted and improved over time more than the default interface. Panel (c) qualitatively illustrates how XT2 helps the interface recover from incorrect 2D gaze position estimates: each green ‘x’ shows that even when the default interface estimates a gaze position far from the intended button, which would normally cause an incorrect action prediction, the reward model can adjust the overall action prediction back to the correct button via Equation 2. We also find that XT2 performs well even when the user’s implicit feedback is slightly noisy: the user backspaces mistakes, and does not backspace correct actions, in 98.6% of their interactions.

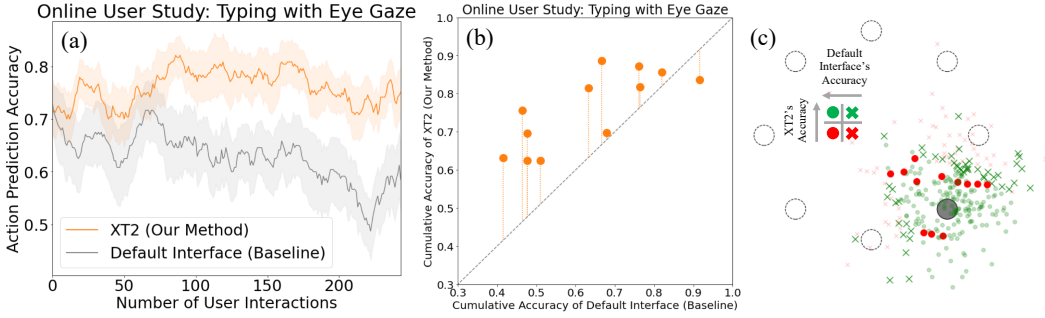


Figure 2: An online user study with 12 participants in the gaze tracking domain that addresses **Q1**: does XT2 improve with use and learn to outperform a non-adaptive interface? **(a)** XT2 predicts the user’s intended action more accurately than the default interface, and the gap between the two methods grows over time. We smooth the curves using a moving average with a window size of 20 interactions, and measure standard error across the 12 users. **(b)** XT2 improves the performance of 10 out of the 12 users, and the improvement from XT2 is smaller when the default interface already performs well. Each orange circle represents one of the 12 users. The dashed gray line shows default-equivalent performance, and the dotted orange lines show the difference between XT2 and default performance. Per-user accuracy is averaged across 250 interactions. **(c)** As shown in the screenshot in Figure 1, the user is shown a display of eight words arranged in a circle. Here, we plot the default interface’s 2D gaze position estimates given user inputs intended to select the gray button. If the default interface’s action prediction would have been accurate without XT2, we mark a circle (vs. an ‘x’). If XT2’s action prediction was accurate, we mark green (vs. red). In particular, each green ‘x’ represents an accurate prediction by the default interface. By training a reward model on user feedback, XT2 helps the interface recover from incorrect gaze estimates.

4.2 USER ADAPTATION TO THE INTERFACE

In the previous experiment, we tested XT2’s ability to adapt the interface to the user. Prior work on human-machine co-adaptation (Nikolaïdis et al., 2017) and the evolution of communication protocols between humans (Hawkins et al., 2020) suggests that an adaptive interface may not only learn to assist a static user, but even stimulate the user to adapt their input style to the interface. In this experiment, we investigate whether the user adapts to the gaze-based interface described in Section 4.1. To do so, we perform a counterfactual experiment: instead of training and evaluating XT2 on inputs x generated by the user while they were typing with XT2, we train and evaluate XT2 on inputs x generated by the user while they were typing with the default interface. During the counterfactual experiment, instead of asking the user for new inputs, we simply replay the old inputs that were intended for the default interface, and automate backspaces. This enables us to test if the user adapted their inputs to XT2, or if the user provided the same distribution of inputs to both the default interface and XT2.

The results in Figure 3 suggest that the user does indeed adapt their input style to the interface, and that this user adaptation improves performance. Comparing XT2’s actual performance (orange curve) to XT2’s counterfactual performance on replayed user inputs that the user originally intended for the default interface (teal

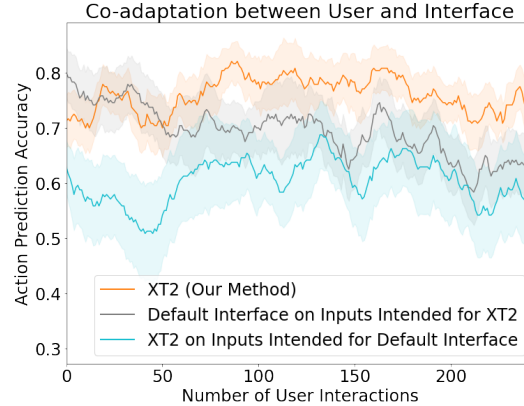


Figure 3: A counterfactual experiment with the online user study data that addresses **Q2**: does the user adapt to the interface while the interface adapts to the user? Training and evaluating XT2 on user inputs originally intended for the default interface leads to worse performance than doing so on user inputs intended for XT2 (orange vs. teal). Evaluating the default interface on inputs intended for XT2 leads to worse performance than evaluating XT2 on the same inputs (orange vs. gray). These results suggest that the user adapts their input style specifically to XT2, and that this user co-adaptation improves performance. We smooth the curves using a moving average with a window size of 20 interactions, and measure standard error across the 12 users.

curve), we see that XT2 is able to perform much better with inputs intended for XT2 compared to inputs intended for the default interface. From this result alone, one might infer that the user provided XT2 with inputs that were more generically predictable than the inputs they provided to the default interface. However, by comparing the default interface’s performance on replayed user inputs that the user originally intended for XT2 (gray curve) to XT2’s performance on the same inputs (orange curve), we see that XT2 performs better than the default interface on the same inputs. This suggests that the user’s inputs to XT2 are not merely easier to predict, but in fact adapted specifically to XT2. In other words, XT2 stimulates user co-adaptation to the interface.

4.3 PERSONALIZING THE INTERFACE FOR DIFFERENT USERS

In this experiment, we demonstrate XT2’s ability to operate on a different type of user input: drawings of characters (see Figure 5 in the appendix); which, for some users, can be easier to provide than direct keystrokes (Willett et al., 2020). We also investigate to what extent XT2 learns a personalized interface that is uniquely adapted to the individual user. To that end, we analyze handwriting samples from 60 users, collected through a tablet and stylus, from the UJI Pen Characters Database (Llorens et al., 2008). Each sample consists of a sequence of 2D positions that traces the trajectory of the user’s pen tip as they draw a known character. We conduct an observational study with this data by sampling goal sentences, replaying a randomly-selected handwriting sample of the user’s desired next character from the goal sentence, and treating each drawing as the user input \mathbf{x} ; akin to the replay experiment in Section 4.2. This observational study is equivalent to an online study, except that it does not permit user co-adaptation to the interface since it replays logged user inputs, and assumes that the implicit feedback signal is not noisy when automating backspaces. To test XT2’s robustness to noise and distributional shift in the user’s input, we perturb the replayed pen tip positions by adding Brownian noise (see Figure 5 in the appendix).

We evaluate (1) a default interface trained to classify handwritten EMNIST characters (Cohen et al., 2017), and (2) XT2. We intentionally train the default interface on EMNIST images instead of UJI Pen Characters drawings, to model real-world applications with a distribution mismatch between the training data and test data, as discussed in Section 3. To address the challenge of selecting from 27 possible character actions, we use a language model (Dai et al., 2019) to predict the prior likelihood of an action $p_{LM}(\mathbf{u})$ given the preceding characters in the user’s text field. We use this language model in both the default interface and XT2. In particular, we set $\bar{\pi}(\mathbf{u}|\mathbf{x}) \propto p_{\phi}(\mathbf{u}|\mathbf{x})p_{LM}(\mathbf{u})$, where p_{ϕ} is the EMNIST image classifier. As in Section 4.1, the default interface stays fixed throughout the experiment and does not adapt to the user, since re-training the default interface would require interrupting the user to collect paired data.

The results in Figure 4 show that XT2 significantly outperforms the default interface (orange vs. gray). We ran a one-way repeated measures ANOVA on the action prediction accuracy dependent measure from the default and XT2 conditions, with the presence of XT2 as a factor, and found that $f(1, 59) = 309.95, p < 0.001$. Furthermore, Table 1 shows that XT2 learns an interface that is particularly suited to the user whose data it was trained on: when an interface trained on user i ’s data is evaluated on data from user $j \neq i$ instead of user i , performance degrades substantially.

4.4 ABLATION EXPERIMENTS

In this experiment, we aim to test the importance of three components of XT2: offline pre-training, an informative prior policy, and online learning. As discussed in Sections 2.2 and 2.3, to improve the initial performance of XT2 and accelerate online learning, we pretrain on offline data collected using the default interface, and incorporate prior knowledge from the default interface into the prior policy $\bar{\pi}$ in Equation 2. Using the handwriting recog-

Training	Evaluation			
	User 1	User 2	User 3	User 4
User 1	.887	.339	.511	.320
User 2	.425	.896	.275	.103
User 3	.633	.697	.841	.505
User 4	.266	.740	.294	.866

Table 1: An observational study with 60 users in the handwriting recognition domain that addresses **Q3**: does XT2 personalize the interface to different input styles? We measure action prediction accuracy across 1000 interactions, and randomly sample users 1-4 from the pool of 60 users. The interface trained on user i is substantially more accurate when evaluated on inputs from user i than on inputs from user j , suggesting that the learned interface is personalized to each individual user.

nition task from Section 4.3, we conduct ablation experiments in which we drop out each of the three components, one by one, and measure any resulting changes in performance. In the first condition, we test the effect of not performing offline pretraining, by initializing XT2 with random weights θ_{init} . In the second condition, we test the effect of not incorporating prior knowledge into our policy, by setting the prior policy $\bar{\pi}$ to be a uniform distribution over actions. In the third condition, we test the effect of not learning online and instead relying solely on offline pretraining, by freezing the reward model parameters after offline pretraining and not storing any online data.

The results in Figure 4 show that using the default interface as a prior policy in Equation 2 is critical for XT2’s performance throughout the experiment (orange vs. red). This is unsurprising, given that the default interface contains useful prior knowledge about how to interpret user inputs. Offline pretraining is also helpful at the onset of online learning (orange vs. teal), but does not have a substantial effect on performance after some online data has been collected. This is also unsurprising, since leveraging offline data is only necessary when insufficient online data has been collected. Online learning is not particularly helpful at the onset of the experiment (orange vs. purple), but has a substantial effect on performance over time. This result shows that learning from on-policy data is critical for XT2. In other words, XT2 learns best when it learns from its own mistakes, rather than the mistakes of the default interface.

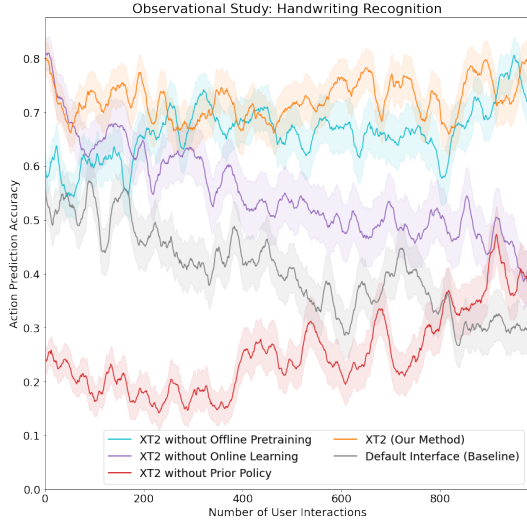


Figure 4: An observational study with 60 users in the handwriting recognition domain that addresses **Q4-5**: do offline pretraining and an informative prior policy accelerate online learning, and does online learning improve the interface beyond the initialization provided by offline pretraining? In this ablation experiment, we remove each of the three components – offline pretraining, an informative prior policy, and online learning – one by one, and find that each component is critical for maintaining high action prediction accuracy at different stages of the experiment.

5 DISCUSSION

We propose the x-to-text (XT2) algorithm for continual learning of a communication interface from online, implicit user feedback. The key idea is to infer a reward signal from user behavior, and train the interface through reinforcement learning. We instantiate this idea in the typing domain by treating backspaces as implicit signals that the interface performed incorrect actions. In our online user study on gaze-based word selection, we show that XT2 learns to outperform a non-adaptive interface in under 30 minutes (including offline data collection), and that the user simultaneously adapts their input style to the interface. In our observational study on handwritten character recognition, we show that XT2 can personalize the interface to individual users, and that offline pretraining and incorporating prior knowledge from the default interface are helpful for improving the initial performance of XT2 and accelerating online learning. These experiments broadly illustrate how online learning from implicit user feedback can be used to train a human-machine interface.

Our formulation of the assistance problem as a contextual bandit is limited in that it does not incorporate temporal context into decision-making. One direction for further algorithm development is to extend XT2 to use more general reinforcement learning algorithms (Sutton & Barto, 2018) that can learn sequential assistance policies. XT2 is also limited in that the benefit from using XT2 to fine-tune the default interface may decrease as the default interface is improved, as suggested by the diminishing returns in Figure 2. One direction for future empirical work is to test XT2 with state-of-the-art default interfaces. Methods like XT2 that learn from their mistakes and stimulate user co-adaptation provide a general mechanism for improving user interfaces; not only for assistive typing, but also for other domains, such as brain-computer interfaces for prosthetic limb control and augmented reality displays for visually-impaired users.

REFERENCES

- Gopala K Anumanchipalli, Josh Chartier, and Edward F Chang. Speech synthesis from neural decoding of spoken sentences. *Nature*, 2019.
- Dilip Arumugam, Jun Ki Lee, Sophie Saskin, and Michael L Littman. Deep reinforcement learning from policy-dependent human feedback. *arXiv preprint arXiv:1902.04257*, 2019.
- Alexander Broad, Todd David Murphey, and Brenna Dee Argall. Learning models for shared control of human-machine systems with unknown dynamics. In *Robotics: Science and Systems*, 2017.
- Ciprian Chelba, Tomas Mikolov, Mike Schuster, Qi Ge, Thorsten Brants, Phillipp Koehn, and Tony Robinson. One billion word benchmark for measuring progress in statistical language modeling. *arXiv preprint arXiv:1312.3005*, 2013.
- Paul F Christiano, Jan Leike, Tom Brown, Miljan Martic, Shane Legg, and Dario Amodei. Deep reinforcement learning from human preferences. In *Neural Information Processing Systems*, 2017.
- Gregory Cohen, Saeed Afshar, Jonathan Tapson, and Andre Van Schaik. Emnist: Extending mnist to handwritten letters. In *International Joint Conference on Neural Networks*, 2017.
- Mark Collier and Hector Urdiales Llorens. Deep contextual multi-armed bandits. *arXiv preprint arXiv:1807.09809*, 2018.
- Zihang Dai, Zhilin Yang, Yiming Yang, Jaime Carbonell, Quoc V Le, and Ruslan Salakhutdinov. Transformer-xl: Attentive language models beyond a fixed-length context. *arXiv preprint arXiv:1901.02860*, 2019.
- Siddharth Dangi, Amy L Orsborn, Helene G Moorman, and Jose M Carmena. Design and analysis of closed-loop decoder adaptation algorithms for brain-machine interfaces. *Neural computation*, 2013.
- Siddharth Dangi, Suraj Gowda, Helene G Moorman, Amy L Orsborn, Kelvin So, Maryam Shanechi, and Jose M Carmena. Continuous closed-loop decoder adaptation with a recursive maximum likelihood algorithm allows for rapid performance acquisition in brain-machine interfaces. *Neural computation*, 2014.
- Yuqing Du, Stas Tiomkin, Emre Kiciman, Daniel Polani, Pieter Abbeel, and Anca Dragan. Ave: Assistance via empowerment. *arXiv preprint arXiv:2006.14796*, 2020.
- Vikash Gilja, Paul Nuyujukian, Cindy A Chestek, John P Cunningham, M Yu Byron, Joline M Fan, Mark M Churchland, Matthew T Kaufman, Jonathan C Kao, Stephen I Ryu, et al. A high-performance neural prosthesis enabled by control algorithm design. *Nature neuroscience*, 2012.
- Ethan K Gordon, Xiang Meng, Matt Barnes, Tapomayukh Bhattacharjee, and Siddhartha S Srinivasa. Adaptive robot-assisted feeding: An online learning framework for acquiring previously-unseen food items. *arXiv preprint arXiv:1908.07088*, 2019.
- Robert D Hawkins, Michael C Frank, and Noah D Goodman. Characterizing the dynamics of learning in repeated reference games. *Cognitive Science*, 2020.
- Natasha Jaques, Shixiang Gu, Dzmitry Bahdanau, José Miguel Hernández-Lobato, Richard E Turner, and Douglas Eck. Sequence tutor: Conservative fine-tuning of sequence generation models with kl-control. In *International Conference on Machine Learning*, 2017.
- Hong Jun Jeon, Dylan P Losey, and Dorsa Sadigh. Shared autonomy with learned latent actions. *arXiv preprint arXiv:2005.03210*, 2020.
- Eleanor Jones, Jason Alexander, Andreas Andreou, Pourang Irani, and Sriram Subramanian. Gestext: accelerometer-based gestural text-entry systems. In *SIGCHI Conference on Human Factors in Computing Systems*, 2010.
- Siddharth Karamcheti, Dorsa Sadigh, and Percy Liang. Learning adaptive language interfaces through decomposition. *arXiv preprint arXiv:2010.05190*, 2020.

-
- Diederik P Kingma and Jimmy Ba. Adam: A method for stochastic optimization. *arXiv preprint arXiv:1412.6980*, 2014.
- W Bradley Knox and Peter Stone. Interactively shaping agents via human reinforcement: The tamer framework. In *International Conference on Knowledge Capture*, 2009.
- Kyle Krafka, Aditya Khosla, Petr Kellnhofer, Harini Kannan, Suchendra Bhandarkar, Wojciech Matusik, and Antonio Torralba. Eye tracking for everyone. In *IEEE Conference on Computer Vision and Pattern Recognition*, 2016.
- Andrew S Lan and Richard G Baraniuk. A contextual bandits framework for personalized learning action selection. In *Educational Data Mining*, 2016.
- John Langford and Tong Zhang. The epoch-greedy algorithm for multi-armed bandits with side information. In *Neural Information Processing Systems*, 2008.
- Tor Lattimore and Csaba Szepesvári. *Bandit algorithms*. Cambridge University Press, 2020.
- Sergey Levine. Reinforcement learning and control as probabilistic inference: Tutorial and review. *arXiv preprint arXiv:1805.00909*, 2018.
- Lihong Li, Wei Chu, John Langford, and Robert E Schapire. A contextual-bandit approach to personalized news article recommendation. In *International Conference on World Wide Web*, 2010.
- David Llorens, Federico Prat, Andrés Marzal, Juan Miguel Vilar, María José Castro, Juan-Carlos Amengual, Sergio Barrachina, Antonio Castellanos, Salvador Espana Boquera, Jon Ander Gómez, et al. The ujpenchars database: a pen-based database of isolated handwritten characters. In *International Conference on Language Resources and Evaluation*, 2008.
- James MacGlashan, Mark K Ho, Robert Loftin, Bei Peng, David Roberts, Matthew E Taylor, and Michael L Littman. Interactive learning from policy-dependent human feedback. *arXiv preprint arXiv:1701.06049*, 2017.
- I Scott MacKenzie and Kumiko Tanaka-Ishii. *Text entry systems: Mobility, accessibility, universality*. 2010.
- Joseph G Makin, David A Moses, and Edward F Chang. Machine translation of cortical activity to text with an encoder–decoder framework. Technical report, 2020.
- Daniel McDuff and Ashish Kapoor. Visceral machines: Reinforcement learning with intrinsic physiological rewards. In *International Conference on Learning Representations*, 2019. URL <https://openreview.net/forum?id=SyNvti09KQ>.
- Josh Merel, David Carlson, Liam Paninski, and John P Cunningham. Neuroprosthetic decoder training as imitation learning. *arXiv preprint arXiv:1511.04156*, 2015.
- Stefanos Nikolaidis, Yu Xiang Zhu, David Hsu, and Siddhartha Srinivasa. Human-robot mutual adaptation in shared autonomy. In *ACM/IEEE International Conference on Human-Robot Interaction*, 2017.
- João Oliveira, Tiago Guerreiro, Hugo Nicolau, Joaquim Jorge, and Daniel Gonçalves. Brailletype: unleashing braille over touch screen mobile phones. In *IFIP Conference on Human-Computer Interaction*, 2011.
- Patrick M Pilarski, Michael R Dawson, Thomas Degris, Farbod Fahimi, Jason P Carey, and Richard S Sutton. Online human training of a myoelectric prosthesis controller via actor-critic reinforcement learning. In *IEEE International Conference on Rehabilitation Robotics*, 2011.
- Krsto Proroković, Michael Wand, and Jürgen Schmidhuber. Meta-learning for recalibration of emg-based upper limb prostheses. 2020.
- Filip Radlinski and Thorsten Joachims. Evaluating the robustness of learning from implicit feedback. *arXiv preprint cs/0605036*, 2006.

-
- Siddharth Reddy, Anca D Dragan, and Sergey Levine. Shared autonomy via deep reinforcement learning. *arXiv preprint arXiv:1802.01744*, 2018.
- Dorsa Sadigh, Anca D Dragan, Shankar Sastry, and Sanjit A Seshia. Active preference-based learning of reward functions. In *Robotics: Science and Systems*, 2017.
- Charles Schaff and Matthew R Walter. Residual policy learning for shared autonomy. *arXiv preprint arXiv:2004.05097*, 2020.
- Richard S Sutton and Andrew G Barto. *Reinforcement learning: An introduction*. 2018.
- Cheng-Yao Wang, Wei-Chen Chu, Po-Tsung Chiu, Min-Chieh Hsiu, Yih-Harn Chiang, and Mike Y Chen. Palmtree: Using palms as keyboards for smart glasses. In *International Conference on Human-Computer Interaction with Mobile Devices and Services*, 2015.
- Sida I Wang, Percy Liang, and Christopher D Manning. Learning language games through interaction. *arXiv preprint arXiv:1606.02447*, 2016.
- David J Ward, Alan F Blackwell, and David JC MacKay. Dasher—a data entry interface using continuous gestures and language models. In *ACM Symposium on User Interface Software and Technology*, 2000.
- Garrett Warnell, Nicholas Waytowich, Vernon Lawhern, and Peter Stone. Deep tamer: Interactive agent shaping in high-dimensional state spaces. *arXiv preprint arXiv:1709.10163*, 2017.
- Francis R Willett, Donald T Avansino, Leigh R Hochberg, Jaimie M Henderson, and Krishna V Shenoy. High-performance brain-to-text communication via imagined handwriting. *bioRxiv*, 2020.
- Alan Wrench. The mocha-timit articulatory database, 1999.
- Duo Xu, Mohit Agarwal, Faramarz Fekri, and Raghupathy Sivakumar. Accelerating reinforcement learning agent with eeg-based implicit human feedback. *arXiv preprint arXiv:2006.16498*, 2020.
- Yisong Yue and Thorsten Joachims. Interactively optimizing information retrieval systems as a dueling bandits problem. In *International Conference on Machine Learning*, 2009.

A APPENDIX

A.1 IMPLEMENTATION DETAILS

Stochastic gradient descent. We use Adam (Kingma & Ba, 2014) to optimize the maximum-likelihood objective in Equation 1.

Offline pretraining. To pretrain XT2 on offline data, we first train the reward model p_θ to convergence on the offline data, and store the learned network weights θ_{init} . Once a minimum of four online input-action-reward triples have been collected, after every interaction, we re-train the reward model p_θ to convergence on the data collected online, using the values θ_{init} to initialize the network weights (e.g., instead of a random initialization).

A.1.1 ONLINE USER STUDY: TYPING WITH EYE GAZE

Eye image features. Instead of operating directly on 224x224 images of the user’s eyes, we use the activations of the last fully-connected layer in the iTracker model (Krafka et al., 2016) as the input \mathbf{x} to our reward model $p_\theta(r|\mathbf{x}, \mathbf{u})$. When training the reward model p_θ , we freeze the iTracker network weights used to generate this 128-dimensional input \mathbf{x} .

Reward model architecture and learning. We set the learning rate for Adam to 10^{-3} , and batch size to 128. In our experiments, for every input \mathbf{x} , there is exactly one desired action \mathbf{u}^* that will result in a positive reward $r = 1$, while all other actions $\mathbf{u} \neq \mathbf{u}^*$ result in a zero reward $r = 0$. In other words, $p(r = 1|\mathbf{x}, \mathbf{u}) = p(\mathbf{u} = \mathbf{u}^*|\mathbf{x})$. Hence, we structure the reward model for XT2 as $p_\theta(r = 1|\mathbf{x}, \mathbf{u}) = f_\theta(\mathbf{u}|\mathbf{x})$, where f_θ is an action classifier. Furthermore, since we expect the reward model to learn to implicitly estimate the user’s gaze position in order to predict actions, we directly incorporate this inductive bias into the model: we structure the action classifier as $f_\theta(\mathbf{u}|\mathbf{x}) \propto \exp(-\|g_\theta(\mathbf{x}) - \text{pos}(\mathbf{u})\|_2)$, where $g_\theta(\mathbf{x})$ outputs a 2D position of the user’s estimated gaze, and $\text{pos}(\mathbf{u})$ is the known 2D position of the button for action \mathbf{u} . Note that even though $g_\theta(\mathbf{x})$ outputs a 2D position, the parameters θ are still trained on the reward prediction objective in Equation 1 (e.g., instead of a 2D gaze position prediction objective). We represent g_θ using a feedforward neural network with one hidden layer containing 64 units, a dropout layer with a dropout rate of 0.3 between the hidden layer and the output layer, and ReLU activations. At each timestep t , we record 10 eye images $\{\mathbf{x}_t^i\}_{i=1}^{10}$ at a sampling rate of 10 Hz, and average our predictions over these 10 inputs. Specifically, for XT2, we set $g_\theta(\mathbf{x}_t) = \frac{1}{10} \sum_{i=1}^{10} g_\theta(\mathbf{x}_t^i)$. For the default interface, we average the 2D gaze position estimates across the 10 samples before predicting the action whose button position is nearest to the average gaze position estimate. We initialize θ_{init} with the offline pretraining scheme described in Section 2.2, using 250 input-action-reward triples collected with the default interface.

Experiment design. We recruited 11 male and 1 female participants, with an average age of 21. Each participant was provided with the rules of the task and a short practice period of 20 interactions to familiarize themselves with the system. Each interaction – which consisted of providing an input, observing the interface’s action, and deciding whether or not to backspace – took an average of 4 seconds. Each participant completed three phases of experiments: A, B, and C. In phase A, they operate the default interface for 250 steps, generating an offline dataset of input-action-reward triples that we use to initialize XT2. In phase B, they operate XT2 for 250 steps. In phase C, they operate the default interface for 250 steps. To avoid the confounding effects of user learning or fatigue over time, we counterbalance the order of phase B and C: six randomly-selected participants completed phase B before C, and the other six participants completed phase C before B. Phase A is used solely to generate offline data to initialize XT2 in phase B. One participant’s room lighting changed substantially during phase B. Since their performance during phase A was substantially better than during phase B, we use their phase A data (instead of phase B data) to measure the default interface’s performance on this one participant. We sample goal sentences from the MOCHA-TIMIT database (Wrench, 1999), following prior work on speech interfaces (Makin et al., 2020). We set the same goal sentences for each user in each condition.

Deterministic policy. In our experiments, we find that sampling actions $\mathbf{u} \sim \pi(\mathbf{u}|\mathbf{x})$ from the stochastic policy π does not substantially improve exploration, and can in fact degrade performance by not always choosing the optimal action. This is most likely due to the use of the default interface $\bar{\pi}$ in Equation 2, which already provides an effective exploration mechanism. Hence,

instead of randomly sampling actions, we deterministically select the highest-likelihood action: $\mathbf{u} \leftarrow \arg \max_{\mathbf{u}} \pi(\mathbf{u}|\mathbf{x})$.

A.1.2 OBSERVATIONAL STUDY: TYPING BY DRAWING CHARACTERS

Perturbing user inputs. We perturb the character drawings in the UJI Pen Characters Database by decomposing each drawing into a sequence of pen tip velocity vectors, adding Brownian noise to each velocity, then integrating over the perturbed velocities to yield a complete, perturbed drawing (see Figure 5 in the appendix). We compute the Brownian noise by sampling an independent Gaussian noise vector with zero mean and variance of $2 \cdot 10^{-4}$ at each timestep, and summing over these noise vectors from time 0 to time t to compute the Brownian noise vector for time t . The same Brownian noise vector is applied to all the velocity segments in a given drawing. Each user input \mathbf{x} is a 28x28 image of the user’s complete, perturbed drawing of a given character. There are 27 possible characters in the action space \mathcal{U} : 26 lower-case letters, and space (which we represent using the digit 7).

Reward model architecture and learning. We set the learning rate for Adam to $5 \cdot 10^{-4}$, batch size to 128, pretrain on the offline data for 20 epochs, and sample actions from the stochastic policy described in Equation 2 (instead of the deterministic policy described in Appendix A.1.1). We also limit the size of the replay buffer \mathcal{D} in Algorithm 1 to the latest 500 input-action-reward triples. We represent the reward model p_{θ} as a neural network with the following architecture: 28x28 input layer, 32x5x5 convolutional layer, 2x2 max pool layer, dropout layer with dropout rate of 0.3, 64x5x5 convolutional layer, 2x2 max pool layer, dropout layer with dropout rate of 0.3, and a fully-connected output layer. We initialize θ_{init} with the offline pretraining scheme described in Section 2.2, using 1000 input-action-reward triples collected with the default interface.

Experiment design. The UJI Pen Characters Database (Llorens et al., 2008) contains handwriting samples from 60 users. For each user, it includes two repetitions of lowercase letters, uppercase letters, and 10 digits, for a total of 1364 samples per user. In our observational study, we randomly sample target sentences, and replay user inputs that attempt to type the characters in those target sentences. In the replays, we automatically backspace incorrect actions; a realistic modeling choice, given that in the online user study in Section 4.1, the user did indeed backspace mistakes, and did not backspace correct actions, in 98.6% of their interactions. As in the online user study, we run each user’s data through two conditions: default and XT2. Since this is an observational study, we do not need to counterbalance the order of the two conditions. For the personalization experiment in Table 1, we assign a randomly-selected, constant value to the random seed of the Brownian noise for each user in each condition. This ensures that comparisons between entry (i, i) and entries $(i, j \neq i)$ in the 4x4 table are not confounded by differences in the input noise, and are only influenced by systematic differences in the users’ individual handwriting styles. As in the online user study, we sample goal sentences from the MOCHA-TIMIT database (Wrench, 1999), and set the same goal sentences for each user in each condition.

Language model. We use the Transformer-XL language model (Dai et al., 2019) – specifically, the word-level version that is pretrained on the One Billion Word dataset (Chelba et al., 2013) – to compute the prior likelihood $p_{\text{LM}}(\mathbf{u})$. To compute character-level likelihoods, we marginalize over the 60000 words in the language model’s vocabulary that occur the most frequently in the One Billion Word training corpus, not including words with punctuation and converting upper-case to lower-case characters. We feed the previously-typed characters in the current sentence (i.e., not including the previous sentences) as context to the language model.

	<i>p</i> -value	Default Interface	XT2
The system selected the words I wanted	< .05	4.50	5.42
The system improved over time	< .05	3.17	4.75
I improved at using the system over time	> .05	4.08	4.42
The system did not select the words I wanted	< .05	4.08	2.83
The system got worse over time	> .05	3.25	2.42
I got worse at using the system over time	> .05	3.25	2.67
I backspaced when there was a mistake	> .05	5.42	5.83
I ignored mistakes (did not backspace them)	> .05	2.33	2.17

Table 2: Subjective evaluations from the 12 participants in the online user study. Means reported below for responses on a 7-point Likert scale, where 1 = Strongly Disagree, 4 = Neither Disagree nor Agree, and 7 = Strongly Agree. *p*-values from a one-way repeated measures ANOVA with the presence of XT2 as a factor influencing responses.

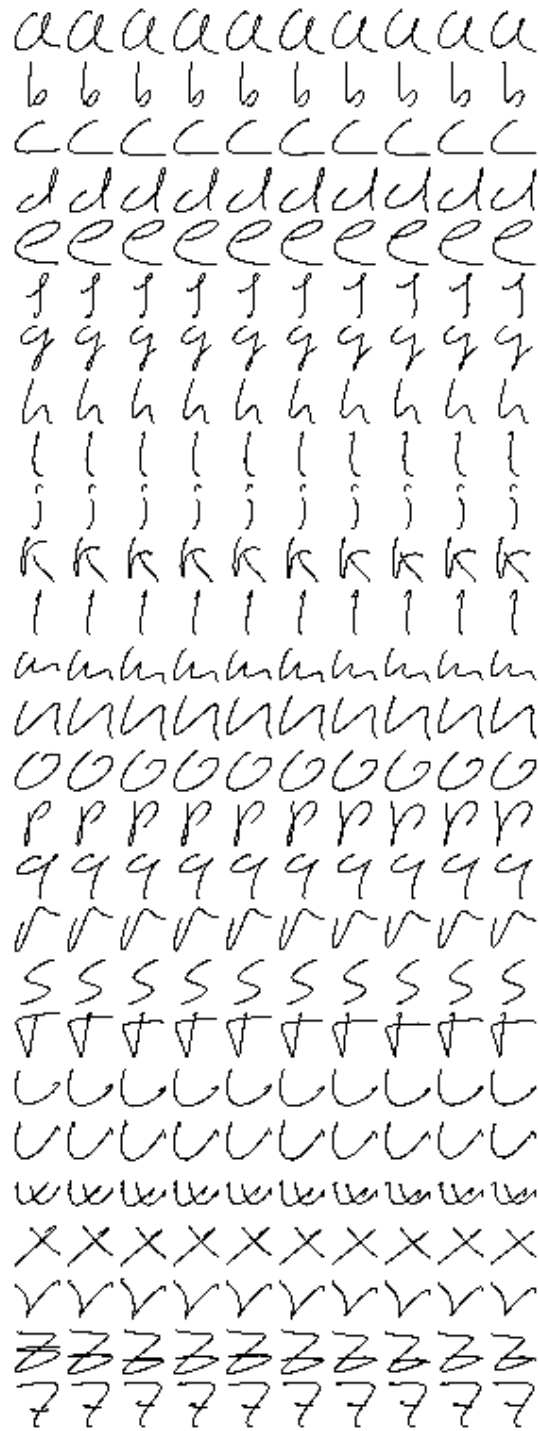


Figure 5: Handwriting samples from the UJI Pen Characters Database that have been perturbed by adding Brownian noise to pen tip velocities. The left-most column shows the true input, and each successive column shows the perturbed input after 100-timestep intervals.